



Function Modules LaserSystem LG 200





Innovative and modular solution for laser marking

The LG-200 is a compact and user-friendly Class 1 laser system for marking different materials.

The laser housing includes all components necessary such as laser supply unit, mechanical z-axis and laser fume extraction system.

Optional rollers on the machine feet provide easy location on level floors. The basic system can be extended at any time with functional modules to meet the current requirements.

Funktions Module Laser System



Ready to use Base-System

IMMEDIATELY READY

The labelling system already contains all components necessary, such as fume extraction, PC control and laser protection.

USER REGISTRATION

Personal identification and individual rights by User login. (optional)

LASERFUME EXTRACTION

Mandatory operator protection through built-in laser fume extraction with pre filter and combined carbon filter to capture harmful dusts.

PLUG AND RAY

Just plug the LG200 into a 230 V socket and you are ready to mark.

MOVE ON WHEELS

Casters guarantee flexibility.
The station is easy to handle and moveable on flat floors.

3 DIFFERENT TYPES OF TABLES

- Aluminium with t-slots
- Smooth Aluminium with threaded holes
- Stainless steel plate

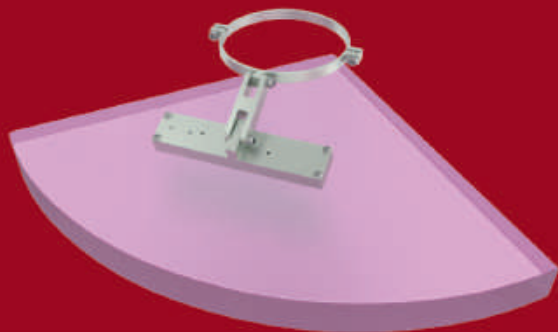


COMPACT DESIGN

The dimensions of the LG-200 are designed that the marking system will fit through a 80 cm Standard door.

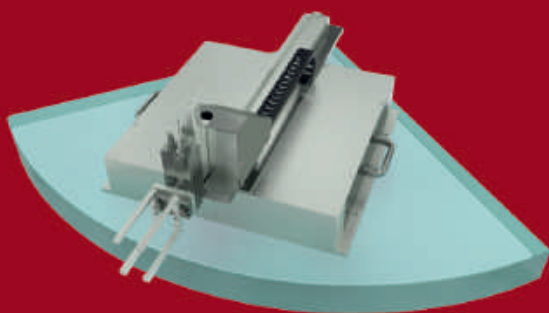
FunctionModules **Laser System**

Explore all the possibilities!



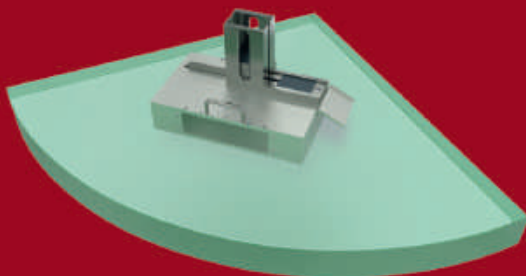
FM PENVISION SMART ADJUST

The workpiece is visible behind the transparent layout and the label can be placed directly at the desired position using the mouse pointer.



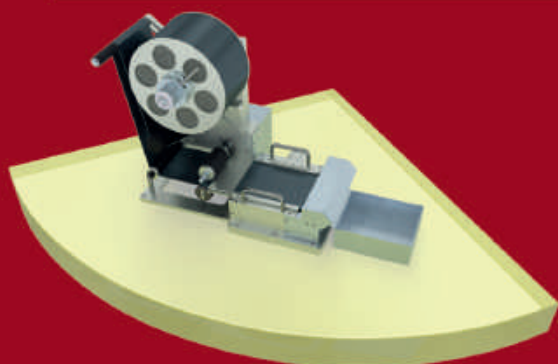
FM ROBOT TRANSFER UNIT

Easy connection to a Robot for automatic transfer and handover of the workpieces including all necessary interfaces.



FM CARD MAKER

Automatic marking solution for type plates
A tool-free removable magazine can be filled outside the machine.



FM LABEL MAKER

Labels engraving and cutting at desired shape and size from the roll. Suitable for product traceability and labelling of large products.

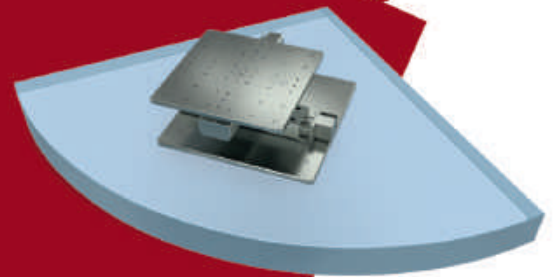




EASY REPLACEMENT OF MODULES
WITHIN A FEW MOMENTS

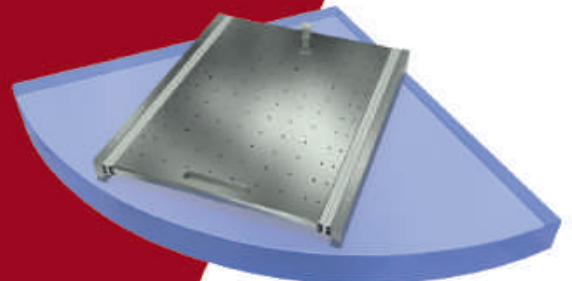
FM X/Y TABLE

The automatic movable X / Y table allows the enlargement of the marking field in X and Y direction and the marking of several small or large parts in one loading



FM EXTENDABLE TABLE

For adjustments and for loading of large or heavy pieces, the door can be fully opened for sliding out the support table towards the operator. Allows vertical loading by crane.



FM ROTARY AXIS

NC-controlled driving head for marking of cylindrical and conical workpieces or rings



Function Modules **LaserSystem**

Explore the possibilities

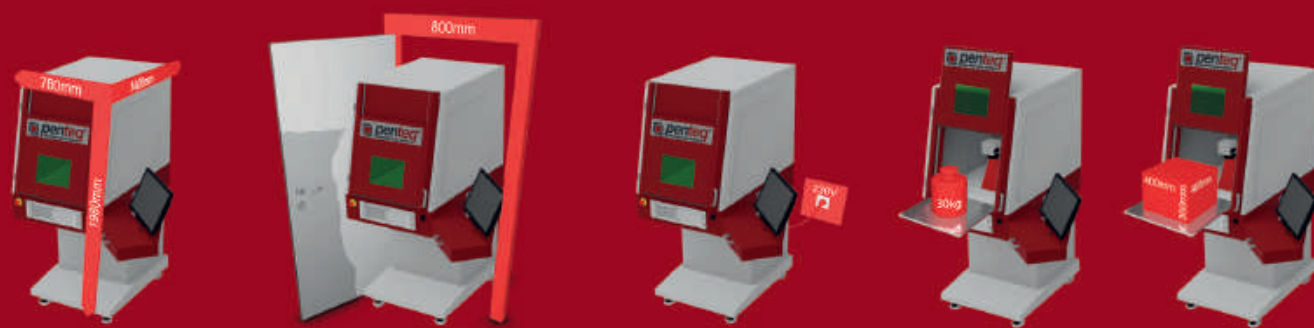


LG 200-series

marking solutions by penteq

The compact, easy-to-use solution for laser marking on a wide range of materials
Plain text, logos and 2D codes can be engraved or annealed for permanent identification.

Easy creation of layouts: Automatically generation of serial numbers, time, date and shift codes, as well as the import of variable data via interface and insertion at free definable areas are possible. (The required data connection is optional.)



THE PENTEQ UNIQUATOR LG-200

Control by integrated PC

Marking area of 120 x 120mm

1.064 nm or 10.650 nm

Laser power 15, 20, 30, 50 Watt

Dimensions (w x h x l): 750(1295) x 1954 x 1150(1481)mm

Weight: 210kg

Power supply: 230V socket



Buy basic system
FunctionModules to buy after

+ extendable table
e.g. after 2 years

+ module rotation axis
e.g. after 3 years

+module robot transfer axis
e.g. after 10 years



Penteq GmbH - Automatic Laser Solutions
Gastgebgsasse 27, 1230 Vienna, AUT
Tel: +43 (0) 1 489 19 03

Production:
Siegfried-Marcus-Str. 2, 9065 Ebenthal, AUT
office@penteq.com

www.penteq.com